

GMLPN 
Greater Manchester
Learning Provider Network

NETWORK MEETING

Future Skills in Greater Manchester

Wednesday 17th July 2024 | 9.00-15.00

Sponsored by:



WELCOME

Julie Lappin

Executive Director | GMLPN



Sponsored by:



OUR PRIORITIES

01

Influencing &
Informing

02

Demonstrating
the Impact of
Vocational &
Technical Skills

03

Facilitating
the Respond
to Employer
Skills Needs

04

Capacity
Building



GM SKILLS AWARDS 2025



Greater Manchester
Chamber of Commerce



Key Dates:

- Nominations Open – September 2024
- Judging Period – March 2025
- Shortlist Announced – April 2025
- Annual Awards Event – 3rd July 2025

Awards Categories:

- Apprentice of the Year (Level 2-3)
- Apprentice of the Year (4+)
- 16-19 Learner of the Year
- Adult Learner of the Year
- Shining Star of the Year
- Unsung Hero of the Year
- Large Employer of the Year
- SME of the Year
- FE College of the Year
- ITP of the Year
- Community Provider of the Year
- HEI of the Year
- Partnership Project of the Year



Sponsorship Opportunities:

- Headline Sponsor
- Award Category Sponsor
- Drinks Reception Sponsor
- Photobooth Sponsor




Professional Exchange Forums

- Quality
- Safeguarding
- Mental Health & Wellbeing
- FE Recruitment & Workforce
- SEND

GMLPN Thematic Boards



- Adult Skills
 - Careers
 - Inclusive Employment
 - Mbacc
 - Technical Education
- 

**NAME THE
GMLPN BEE!**



FURTHER EDUCATION CHALLENGES & OPPORTUNITIES FOR 2024/25

Mark Currie

Chair | GMLPN



Sponsored by:



Some of the Challenges

- **Significantly increasing NEETs**
- **Lack of resource capacity in FE colleges**
- **Loss of Traineeships**
- **Eradication of the ‘stepping stone’ apprenticeships**
 - i.e. Level 2 Business Admin
- **Barriers to successful apprenticeship completion**
 - Mandatory Level 2 Functional Skills for Level 3 apprenticeships
 - Functional Skills are not ‘functional’
 - Artificial minimum apprenticeship length of 12 months

Apprenticeship Starts 2016-23

| Level Band | 2016/17 | 2017/18 | 2018/19 | 2019/20 | 2020/21 | 2021/22 | 2022/23 |
|------------------------|----------------|----------------|----------------|----------------|----------------|----------------|----------------|
| Intermediate (Level 2) | 260,700 | 161,400 | 143,600 | 99,200 | 84,200 | 91,500 | 76,300 |
| Advanced (Level 3) | 197,900 | 166,200 | 174,700 | 140,800 | 138,500 | 151,300 | 147,900 |
| Higher (Level 4-7) | 36,600 | 48,200 | 75,100 | 82,500 | 98,800 | 106,400 | 112,900 |
| Total | 495,200 | 375,800 | 393,400 | 322,500 | 321,500 | 349,200 | 337,100 |

[Apprenticeship statistics for England - House of Commons Library \(parliament.uk\)](https://www.parliament.uk/library/research-and-briefing/papers/2022/2022-01-13-apprenticeship-statistics-for-england)

Apprenticeship Starts 2016-23

| Apprenticeship | 2016/17 | 2017/18 | 2018/19 | 2019/20 | 2020/21 | 2021/22 | 2022/23 |
|---|-------------------|---------------|---------------|---------------|--------------|--------------|--------------|
| Business Admin Fwrk L2 | 30,000 | 17,210 | 12,940 | 7,310 | 210 | 30 | 10 |
| Customer Service L2 (Fwrk & Stnd) | 13,000 | 10,610 | 8,630 | 4,730 | 6,710 | 5,670 | 4,570 |
| Health & Social Care Fwrk / Healthcare Support Worker Stnd L2 | no data available | 11,190 | 4,830 | 2,600 | 1,970 | 1,620 | 1,540 |
| Total | | 39,010 | 26,400 | 14,640 | 8,890 | 7,320 | 6,120 |

<https://explore-education-statistics.service.gov.uk/data-tables/permalink/5aa08010-ccf3-4b57-5c19-08dca56ec4d7>

Some of the Opportunities

- **Bring back Business Admin Level 2**
 - Key missing stepping stone as apprenticeship entry point and progression to Level 3
- **Functional Skills – make them ‘functionally occupational’**
 - Embed in apprenticeship standards for contextualisation
 - Assess for learning – needs of the learner on specific programme, not generalised maths and English
- **Apprenticeship length**
 - Consider alternative models – shortened in line with occupation and achieving mandatory professional qualifications

Your feedback!



Andy Burnham

Greater Manchester Mayor

ANDY BURNHAM

MAYOR OF
GREATER
MANCHESTER



Sponsored by:



Refreshment Break



Sponsored by:



FUTURE SKILLS IN GM – PANEL DISCUSSION

Susanna Lawson

Founder | Onefile



Sponsored by:



FUTURE SKILLS IN GREATER MANCHESTER



Gemma Marsh
Director Education,
Work & Skills
GMCA



Chris Fletcher
GMLSIP Director and
Policy Director
GMCC



Laura-Jane Rawlings MBE
CEO
Youth Employment UK



John Hamilton
Head of Business
Development
Gateway Qualifications

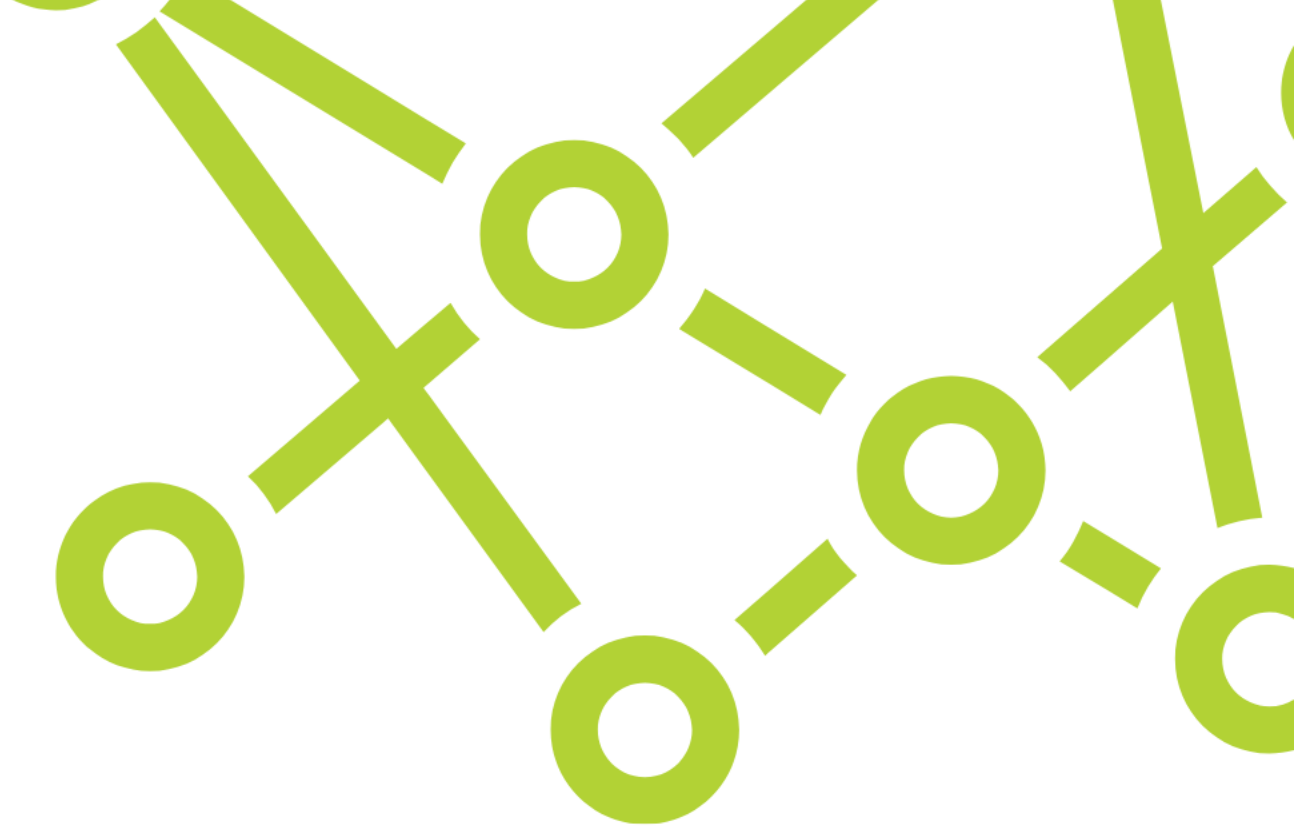
TITLE TBC

John Hamilton

Head of Business Development |
Gateway Qualifications



Sponsored by:



GMLPN: Qualification reforms and the impact on future skills needs

John Hamilton
Head of Business
Development

 gateway
qualifications



Overview

Education vs Employment

Qualification reform – How did we get here?

What does this mean for Adults?

What does this mean for young people?

What works now – Flexibility & Trust

Youth Employment UK

Q&A



Qualification Reform

How did we get here?

 01206 911 211

 @GatewayQuals

 www.gatewayqualifications.org.uk

 enquiries@gatewayqualifications.org.uk



IfATE – The key drivers of this

The reforms' core aim is to ensure that, by 2030, all technical qualifications are built around IfATE-approved occupational standards.

The Institute for Apprenticeships and Technical Education (IfATE) has launched a new employer-led process for approving level 3 and level 2 technical qualifications.

This will ensure that technical qualifications all deliver on employers' skills needs by:

- **Applying our statutory tests (provided through the Skills and Post 16 Education Act 2022) to make sure content and assessment meets employers' needs**
- **Ensuring the system is coherent, rigorous, and streamlined to maximise quality and minimise bureaucracy**

The plan for level 3 was consulted on in Summer 2022 and plans for level 2 consulted on in January 2023, with feedback confirming reform is needed because employers struggle to understand and engage with the system. **Employers think there is too much choice, and hard to know which skills training programmes meet their needs.**

What success looks like (IfATE)...

IfATE – Perspective / Understanding

The reforms' core aim is to ensure that, by 2030, all technical qualifications are built around IfATE-approved occupational standards.

What is level 3 and level 2 and where do they sit with other qualification levels?:

The most basic level of training is level 1 (not entry) **level 2 is one step up from that, and is the equivalent to GCSE. Level 3 is a further step up from level 2 and equivalent to skills-focused T Levels or academic A Levels.**

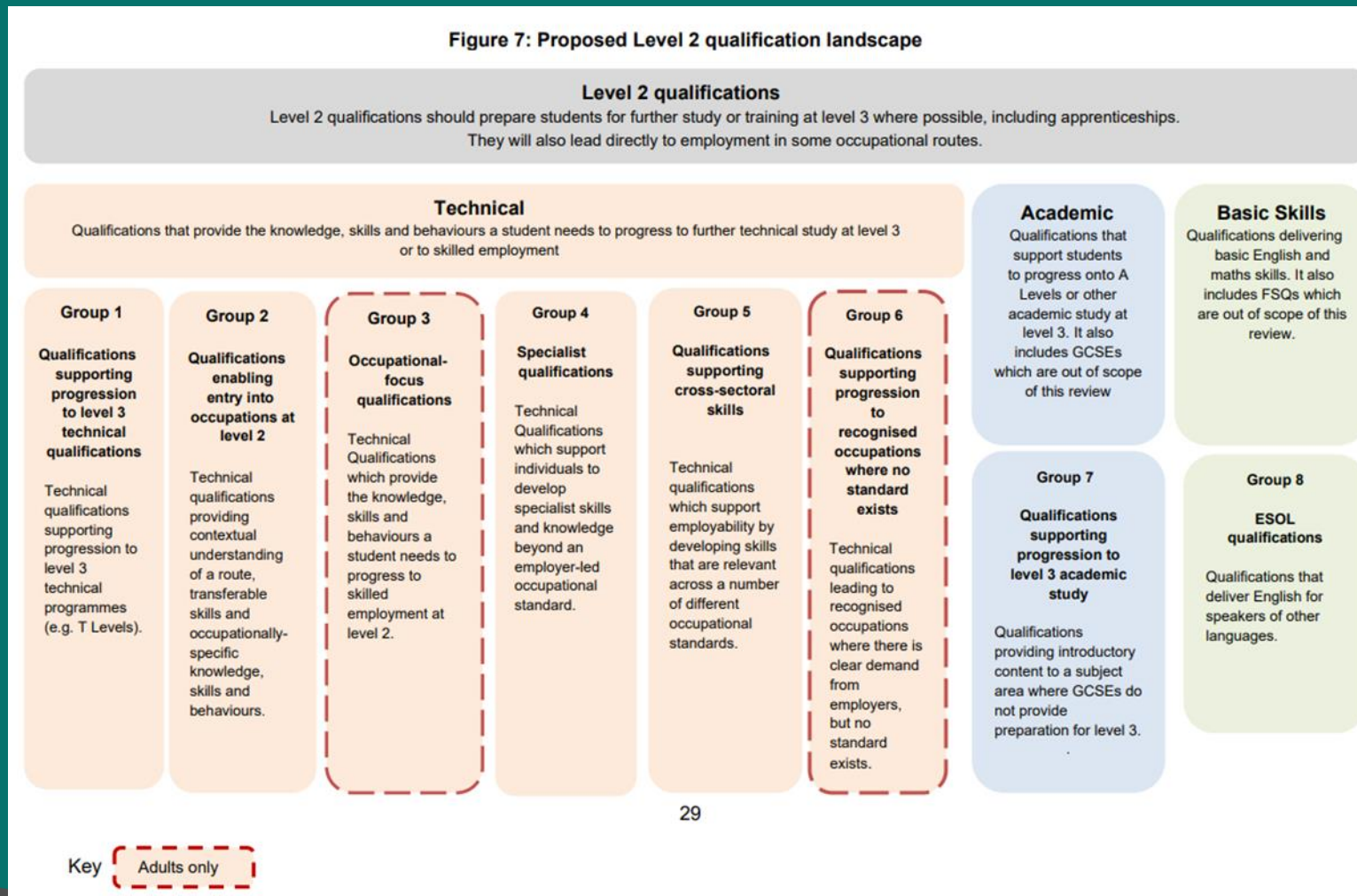
What do you mean by technical education and technical qualifications?:

Technical education: This term describes government-funded training and assessment for work (often for a specific job or occupation). It covers classroom, work and online-based training including apprenticeships, which typically involve at least 80% learning on the job and an average of 6 hours per week studying off-the-job, with a college or private training provider.

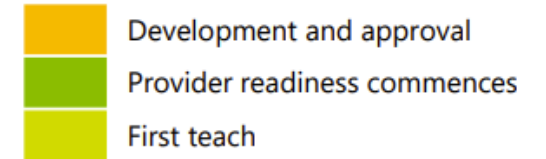
Technical qualifications: Technical qualifications are qualifications intended to deliver the skills needed to enter or progress in the workplace. These can be delivered in a classroom environment, but some will also consist of workplace learning and assessment. The 'qualification' covers the required teaching content and assessment and is owned by the awarding body who develops the content. Training providers pay them to be able to teach the content and for the awarding body to oversee assessment.

Level 2 – Current path...

Figure 7: Proposed Level 2 qualification landscape



Timelines for the reform...



| Cycle | Group and purpose | 23/24 | 24/25 | 25/26 | 26/27 | 27/28 |
|--|--|-------|-------|-------|-------|-------|
| Cycle 1 | Group 2: Occupational entry qualifications [Construction, Education & Childcare, Engineering/Manufacturing, Health and Science] | ■ | ■ | ■ | | |
| | Group 3: Occupational focus qualifications [Construction, Education & Childcare, Engineering/Manufacturing, Health and Science] | ■ | ■ | ■ | | |
| | Group 4: Specialist qualifications | ■ | ■ | ■ | | |
| Cycle 2 Groups 2 - 6 all other qualification areas | Group 1: Progression to technical level 3 qualifications [all L3 routes/academic subject areas reformed 2025 and relating to all wave 1-5 T Levels] | | ■ | ■ | ■ | |
| | Group 2: Occupational entry qualifications [2-year qualification] | | ■ | ■ | ■ | |
| | Group 3: Occupational entry qualifications | | ■ | ■ | ■ | |
| | Group 4: Specialist qualifications | | ■ | ■ | ■ | |
| | Group 5: Cross-sectoral skills | | ■ | ■ | ■ | |
| | Group 6: progression to recognised occupations where no standard exists | | ■ | ■ | ■ | |
| | Group 7: Progression to level 3 academic study [all L3 routes/academic subject areas reformed 2025 and relating to all wave 1-4 T Levels] | | ■ | ■ | ■ | |
| Cycle 3 | Group 1: Progression to technical level 3 qualifications [all L3 routes/academic subject areas reformed 2026] | | | ■ | ■ | ■ |
| | Group 7: Progression to level 3 academic study [all L3 routes/academic subject areas reformed 2026] | | | ■ | ■ | ■ |

What will Level 2 qualifications look like?

- There is no Level 2 that will be less than 150 GLH
- More rigorous assessment (equivalent to GCSE mantra)
- Less flexibility for the learner and choice due to high standard
- Fewer qualifications in the market at Level 2
- More ridged curriculum (Lack of flexible choice)
- Strict timeline in how, what and when we can develop (min 12 -18 months)
- L2 Qualifications must be linked to employer need – nothing else

What does this mean for
Adults and ASF?

 01206 911 211

 @GatewayQuals

 www.gatewayqualifications.org.uk

 enquiries@gatewayqualifications.org.uk



For L2 Adults ...

Devolution flexibilities will be important for ASF/ AEB
to keep qualifications available for funding

GMCA GREATER
MANCHESTER
COMBINED
AUTHORITY

*But will mean a very confusing system with
postcode lottery of devolved vs non-devolved

What does this look like for
young people?

 01206 911 211

 @GatewayQuals

 www.gatewayqualifications.org.uk

 enquiries@gatewayqualifications.org.uk



Young people are living with a legacy of Covid 19

The pandemic dramatically impacted access to education, which is intrinsically connected to access to food, for vulnerable young people, but also to play, socialisation, welfare and overall mental wellbeing. Impacts unfolded in line with other vulnerabilities, including the digital divide and home conditions that made learning challenging – with all of these factors having, in many cases, devastating impacts on young people’s learning and life trajectories.

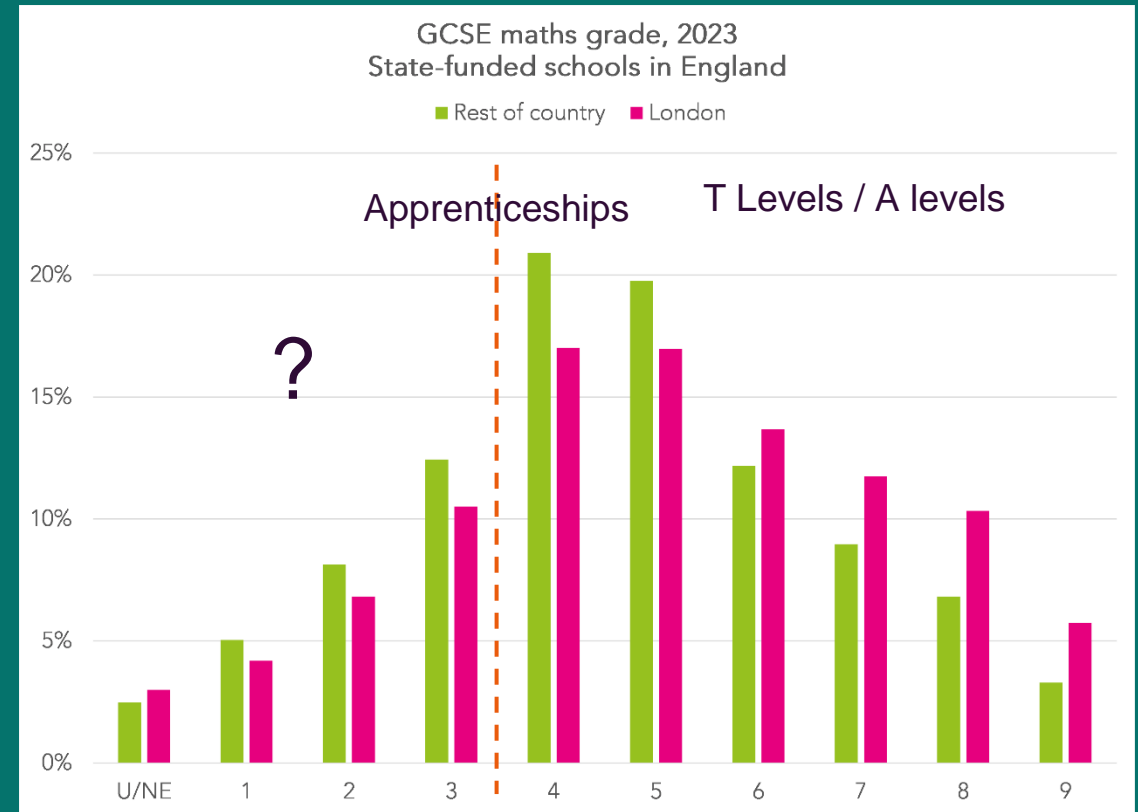
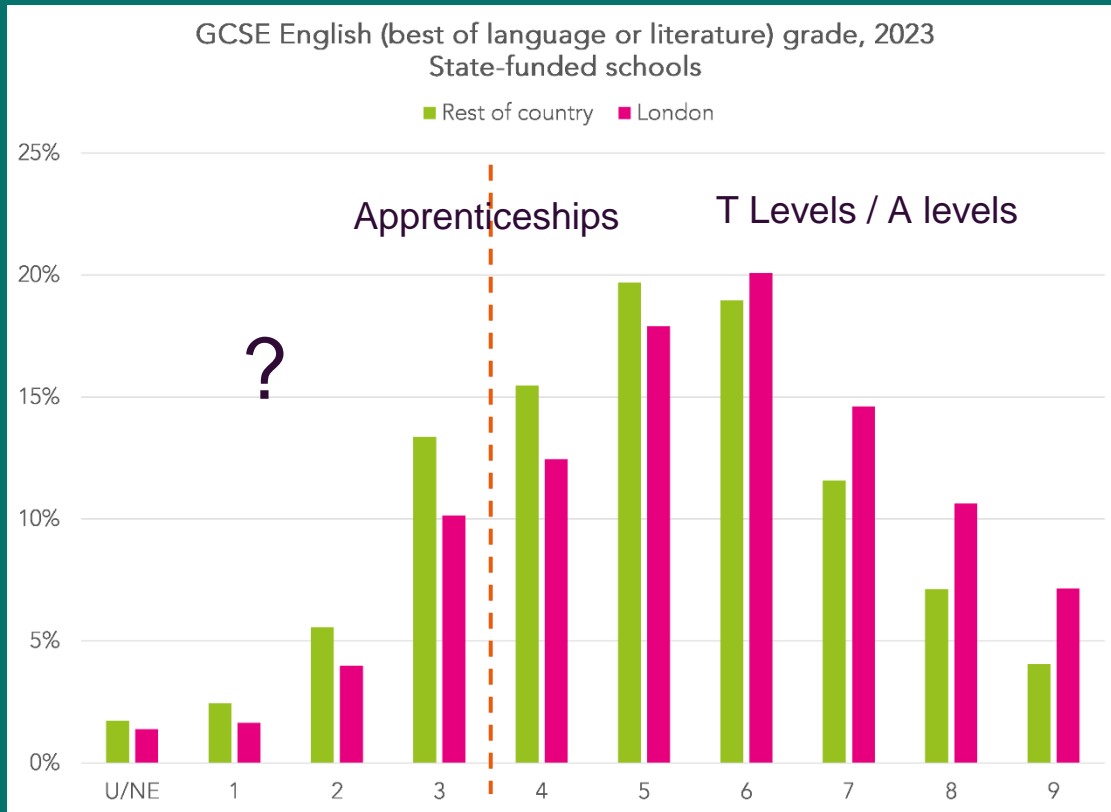
Research by the University of Strathclyde, covering schools in England, predicts that fewer than four in 10 pupils in 2030 will achieve a grade 5 or above in their English and mathematics GCSEs – lower than the 45.3% of pupils who achieved this benchmark in 2022/23.

LSE CEP Associate Andy Eyles added: “To our knowledge, this is the first time this type of analysis has been used in this way to assess the consequences of the pandemic in England. Our results suggest that to improve child outcomes, much greater emphasis is needed in schools **on activities that improve both socio-emotional and cognitive skills.**”

[Impact of COVID-19 “will affect exam results well into the 2030s” | University of Strathclyde](#)

[Educational damage caused by the pandemic will mean poorer GCSE results for pupils well into the 2030s \(lse.ac.uk\)](#)

KS4 data shows large numbers around 1 in 3 learners not achieving – where is the provision for them when they leave school?



***Significant regional disparity**

[The widening gap in attainment at Key Stage 4 between London and the rest of the country - FFT Education Datalab](#)

Apprenticeships and Young People

There has been a large drop in the number of apprenticeship starts at intermediate level, and a large increase in the number of starts at higher level. In 2014/15, 60% of starts were at intermediate level and only 4% were at higher level.

A 41% fall in apprenticeship starts for the under 19s and a 36% decline for those aged 19-24 years old between 2015/16 and 2022/23, further to the levy's introduction in 2017.

- Well-known barriers to entry with Functional Skills
- The repeated rebuttal of Business Admin Level 2 Standard
- Retention rates for young people
- OFSTED – higher risks with harder to reach

Funding drives behaviour...

What behaviour will we see should Levy flex come into play?

Health & Social Care – A Learner's Options

L3 Lead Adult Care Worker

L2 Adult Care Worker

L3 T Level – Health



L2 T Level Foundation course in Health

L3 AAQ in Health & Social Care



L2 Academic Progression Qualification in Health and Social Care

Adult Care Cert
Skills for Care



NEET

Election...

What difference can the new Labour Government make and how quickly?



Now is the time to voice opinion...

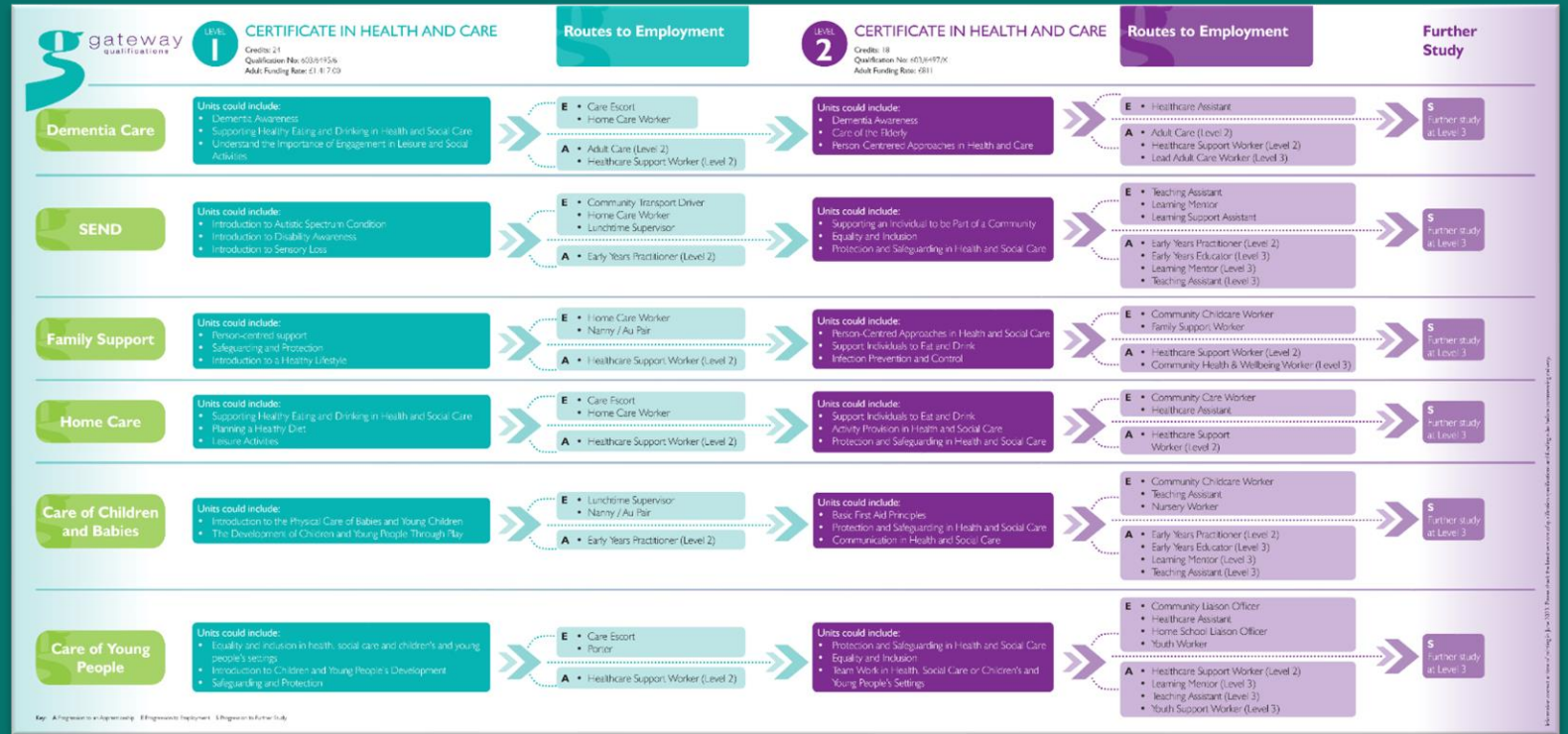
Level 2 Study Programmes 16 – 19



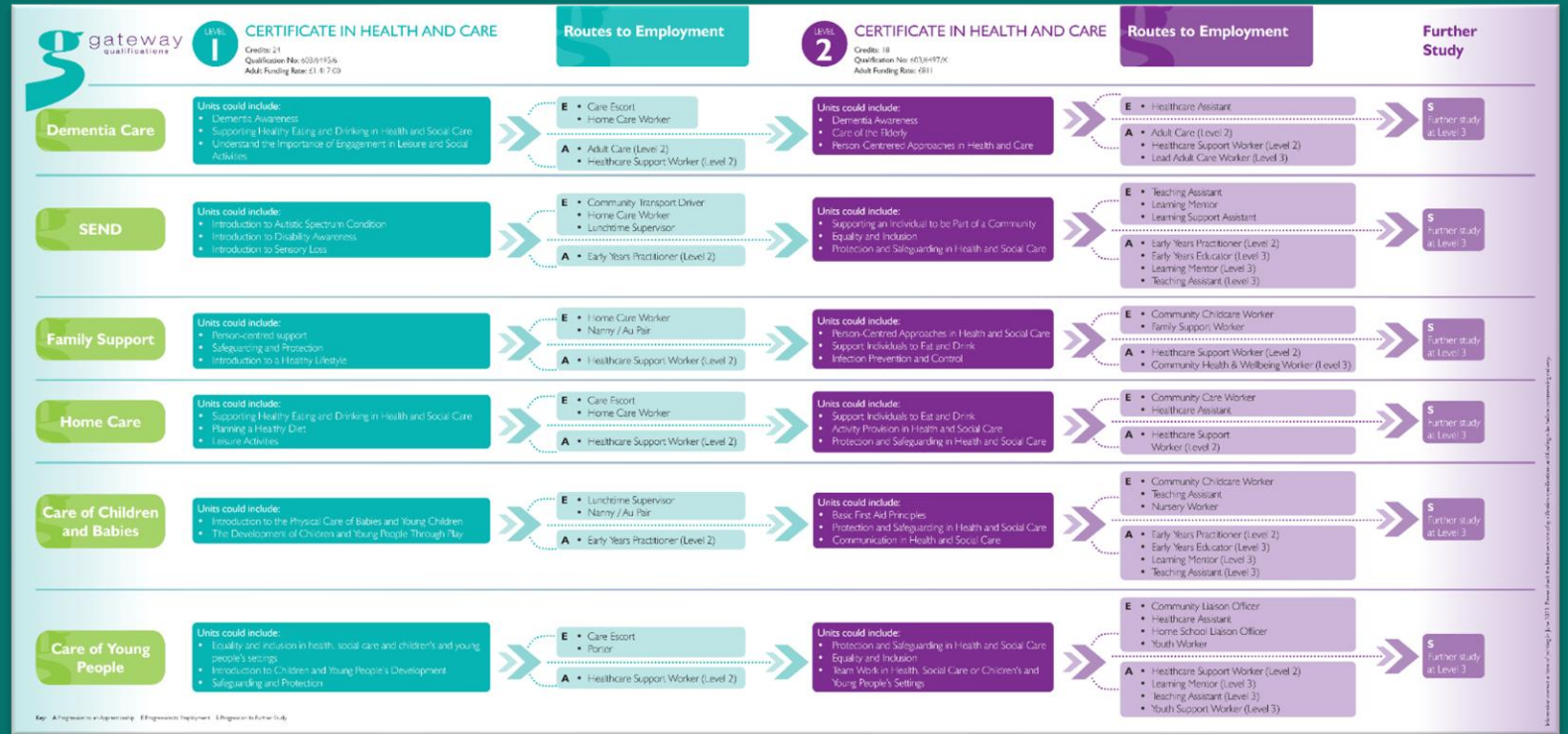
Scan QR code to
view all our Study
Programmes



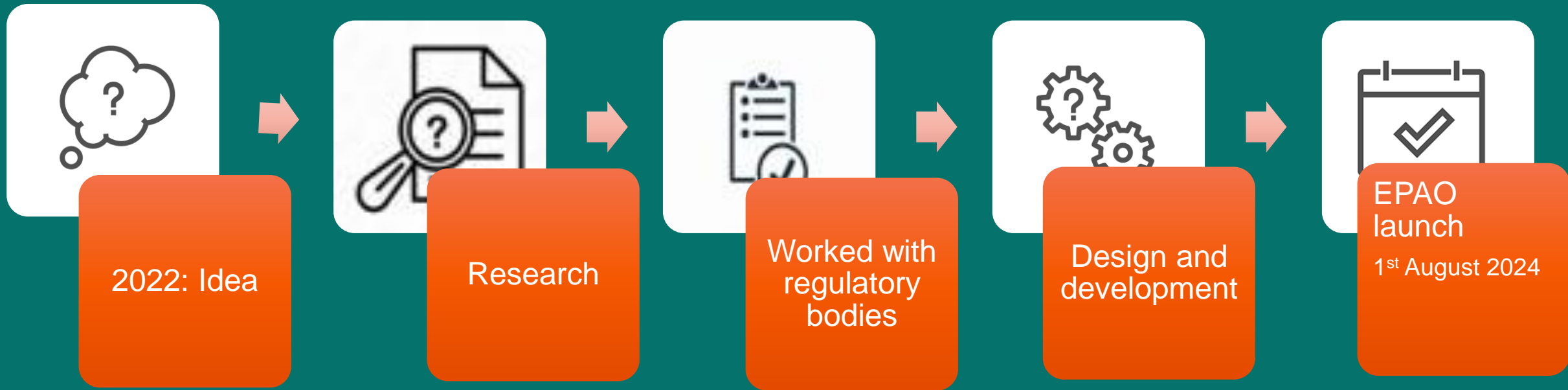
Progression Pathways - Adult



Progression Pathways - Adult



EPAO Development



EPA Standards:

Level 2
Customer
Service
Practitioner

Level 3
Customer
Service
Specialist

Level 3
Business
Administrator

Level 3 Team
Leader

Level 5
Operational /
Departmental
Manager

Our aim

To work with a core number of providers who share our values so we can give the best service for you to make the greatest impact :



Contact us



John Hamilton

Connect
with me:



- <https://www.gatewayqualifications.org.uk/>
- enquiries@gatewayqualifications.org.uk
- 01206 911 211
- [GatewayQuals](#)
- [Gateway Qualifications](#)



Youth Employment UK

**PRESENTED BY:
Laura-Jane Rawlings MBE**





About Us

Founded in 2012 as a not for profit, community interest company Youth Employment UK is the expert voice on youth employment.

To achieve full youth employment, support the economy and ensure all young people are able to fulfil their potential we must

- Improve transitions from education to employment
- Support employers to attract, retain and develop young people
- Ensure no young person is left behind

For organisations:

- Our **membership service** provides guidance, best practice, support and recognition through the Good Youth Employment Standards.
- **Employer Profiles** drive brand recognition, recruitment campaigns and connection with young people.

For Young People:

- We provide a trusted space for sharing their **voice** on the youth employment issues that impact them.
- Our **careers, skills and employability** content supports them to be more informed and prepared to navigate their next steps.

For policy and research professionals:

- Our **expertise, connections and counsel** offer a unique breadth of insight and support.
- We provide the highly anticipated and respected annual **Youth Voice Census**.
- We are the secretariat for the APPG for Youth Employment.



The landscape



- NEET rate at 900,000, the highest in a decade
- Confidence young people have is at an all time low
- Political change is coming, BUT change takes time and there is more that we can do to improve the opportunities available for young people

This session

- Utilises the evidence and insight we have from young people across the UK, with a focus on the 2023 [Youth Voice Census](#) findings
- Consider the policy challenges around youth unemployment
- What works for NEET young people
- Youth Employment UK Services



Systemic Issues



Who you are



Where you live



Education & Training



Global Issues



Access to opportunities



Policy Initiatives



Youth Voice Census 2023

01

Disaffected & Disconnected

- Anxiety & mental health challenges increased
- Safety & fear
- Growing disenchantment

02

Catching up

- Disruption continues, particularly in education
- Experiences of work are down
- On receiving support for key issues

03

Facing the future

- Careers education is increasing in secondary school
- But, the closer you get to work the less ready you feel

04

Quality Work

- Workloads, stress and pressure increasing
- Anxiety and depression
- Apprentices continue to be 'happiest' workers



YOUTH

VOICE

CENSUS

Journey to Employment Framework

1. Personal circumstances
2. Emotional capabilities
3. Attitudes to work
4. Employability skills
5. Qualifications, education and training
6. Experience and involvement; and
7. Career management skills



What works?

- Recognising young people for who they are, and where they are at
- Tailoring support including key skills, careers information support and experiences of work
- Partnerships between education, employment and third sector





How Youth Employment UK helps

For young people

- Free careers and skills training for 11-30 year olds
- Virtual work experience
- Advice and inspiration
- Connections to Good Youth Employers

Find Opportunities

Discover local jobs and events
with youth friendly employers

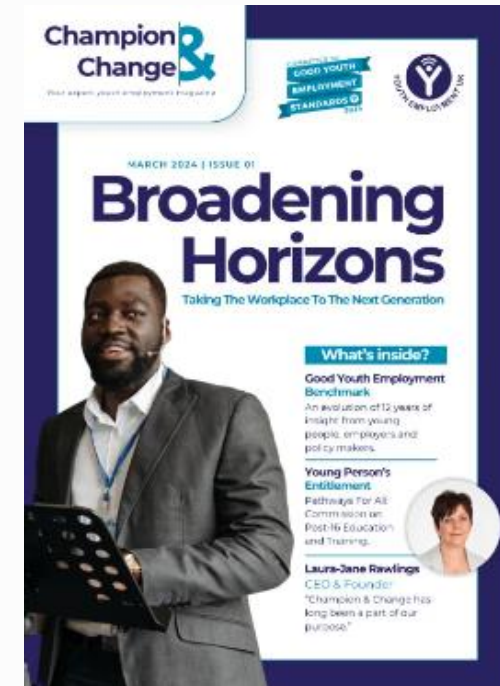
Opportunity Finder >



How Youth Employment UK helps

For employers

- Membership
- Benchmark Tool
- Recruitment
- Virtual Work Experience
- Expert advice and support



Dates for the diary



SAVE THE DATE

YOUTH EMPLOYMENT WEEK 2024



15th - 19th July 2024

Save the date - Youth Employment Week is back! Now in its second year, Youth Employment Week is a celebration of young people and employers. We will be hosting a week of events and activities.



SAVE THE DATE

GOOD YOUTH EMPLOYMENT BENCHMARK

Closes on 29th August 2024

This first-of-its-kind digital tool allows employers to measure and monitor their current youth employment practice.

Access to the Benchmark is exclusively available through Youth Employment UK Membership.





Contact & Connect

Address

Britannia House, 29 Station Road, Kettering, NN15 7HJ

Phone

01536 513388

Email

info@youthemployment.org.uk

Website

www.youthemployment.org.uk

Socials



Twitter:
[@YEUK2012](https://twitter.com/YEUK2012)



Facebook:
[@youthemploymentuk](https://facebook.com/youthemploymentuk)



LinkedIn:
[@youthemploymentuk](https://linkedin.com/company/youthemploymentuk)



Instagram:
[@youthemploymentuk](https://instagram.com/youthemploymentuk)

Questions?

 01206 911 211

 @GatewayQuals

 www.gatewayqualifications.org.uk

 enquiries@gatewayqualifications.org.uk



ROUNDTABLE DISCUSSION



Sponsored by:



CLOSE & NEXT STEPS

Julie Lappin

Executive Director | GMLPN



Sponsored by:



GMLPN Thematic Boards

Expression of Interest

- Adult Skills
- Careers
- Inclusive Employment
- Mbacc
- Technical Education



GMLPN Professional Exchanges

Expression of Interest

- Quality
- Safeguarding
- Mental Health & Wellbeing
- FE Recruitment & Workforce
- SEND





GMLPN Dashboards

GMLPN Home

GMLPN Members

Ofsted

NEET

GM Population

Multiply Project




Welcome to The Greater Manchester Learning Provider Network Dashbo



GMLPN MEMBERS

A summary of all GMLPN Members, the boroughs in which they operate and the services they provide.




NEET DASHBOARD

An analysis on the number of NEET people in the GM area & Homeschooling/Survey details.



GM POPULATION

An analysis on recent Greater Manchester Population figures & a breakdown into data groups.



MULTIPLY PROJECT (PSP)

A summary of all recently logged KPI data and a breakdown of Event attendance.

GMPLN Members Dashboard



Map View



Achievements & Starts



Apprenticeships & T-Levels



Adult Skills - COMING SOON

POWERED by PMP BI



GMLPN Members -- Map View

Outside of GM ▼ Inside GM Area ▼
 GMLPN Member ▼ All ▼
 Type ▼ All ▼
 City/Town ▼ All ▼

Different Members

81



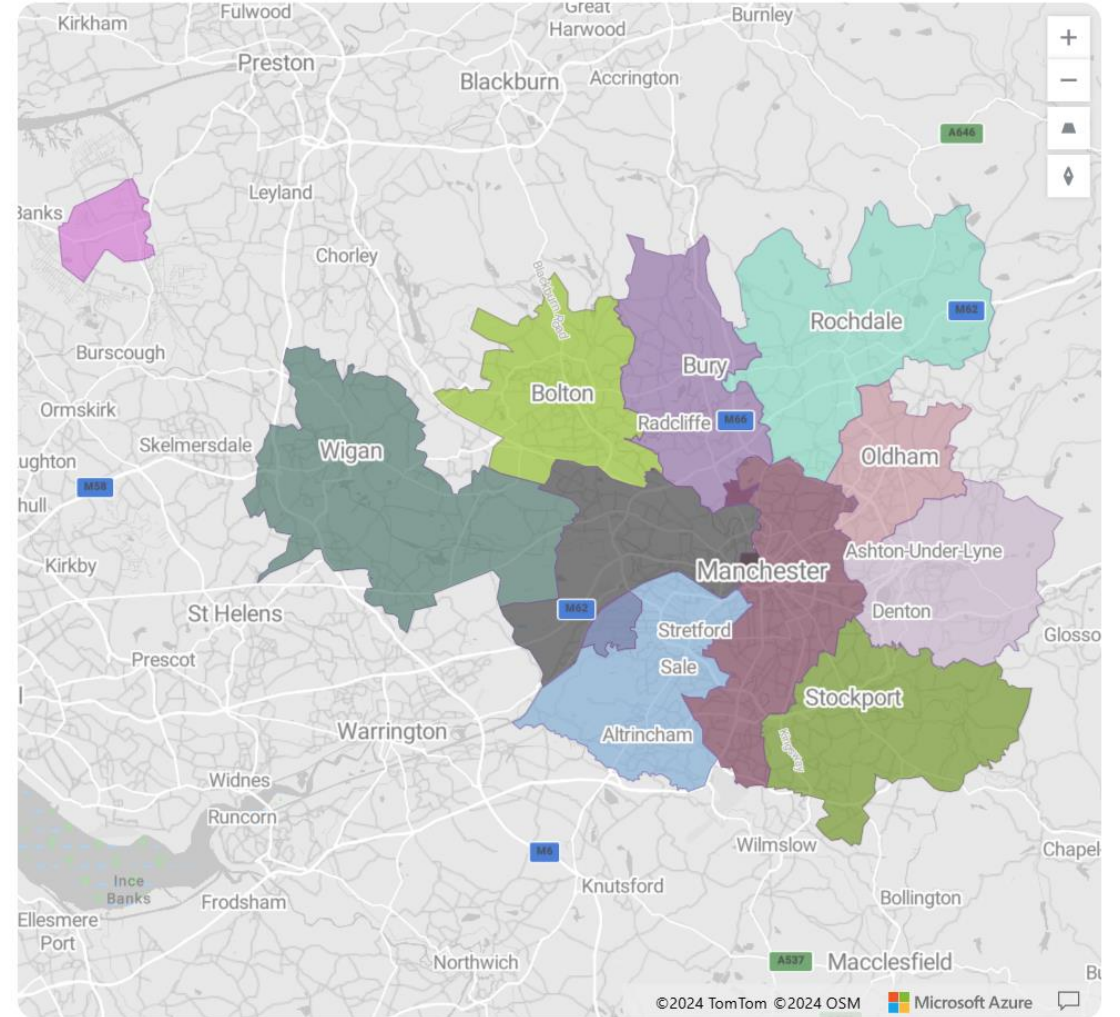
Institution Types

9



GMLPN Members by Local Authority

GMLPN Members by Location




GMLPN Member Details

| GMLPN Member | Type | City/Town |
|--|--------------------|------------|
| Acorn Training | ITP | Bolton |
| Acorn Training | ITP | Manchester |
| Alliance Learning | ITP | Bolton |
| ANS Group | Employer Provider | Manchester |
| Back 2 Work Training Complete Training | ITP | Manchester |
| Barnardo's | Community Provider | Manchester |
| Beau Associates | ITP | Tameside |
| Bolton College | FE College | Bolton |
| Bright Direction Training Limited | ITP | Manchester |
| Brighter Beginnings Day Nursery (Race Ahead) | ITP | Oldham |
| Bury College | FE College | Manchester |
| Bury Council - Bury Adult Learning Service | Local Authority | Bury |
| Competence Development | ITP | Wigan |
| Damar Training | ITP | Manchester |
| Dentrain Professionals | ITP | Bolton |
| Digital Advantage | ITP | Manchester |
| DMR Training & Consultancy | ITP | Tarleton |
| Ecta Training | ITP | Stockport |
| Elevated Knowledge Limited | ITP | Stockport |
| Eliteform | Community Provider | Oldham |
| Eliteform | Community Provider | Stockport |
| Elysium Training & Consultancy | ITP | Manchester |
| Evolve Academy | ITP | Manchester |


Different Members

7



Institution Types

4

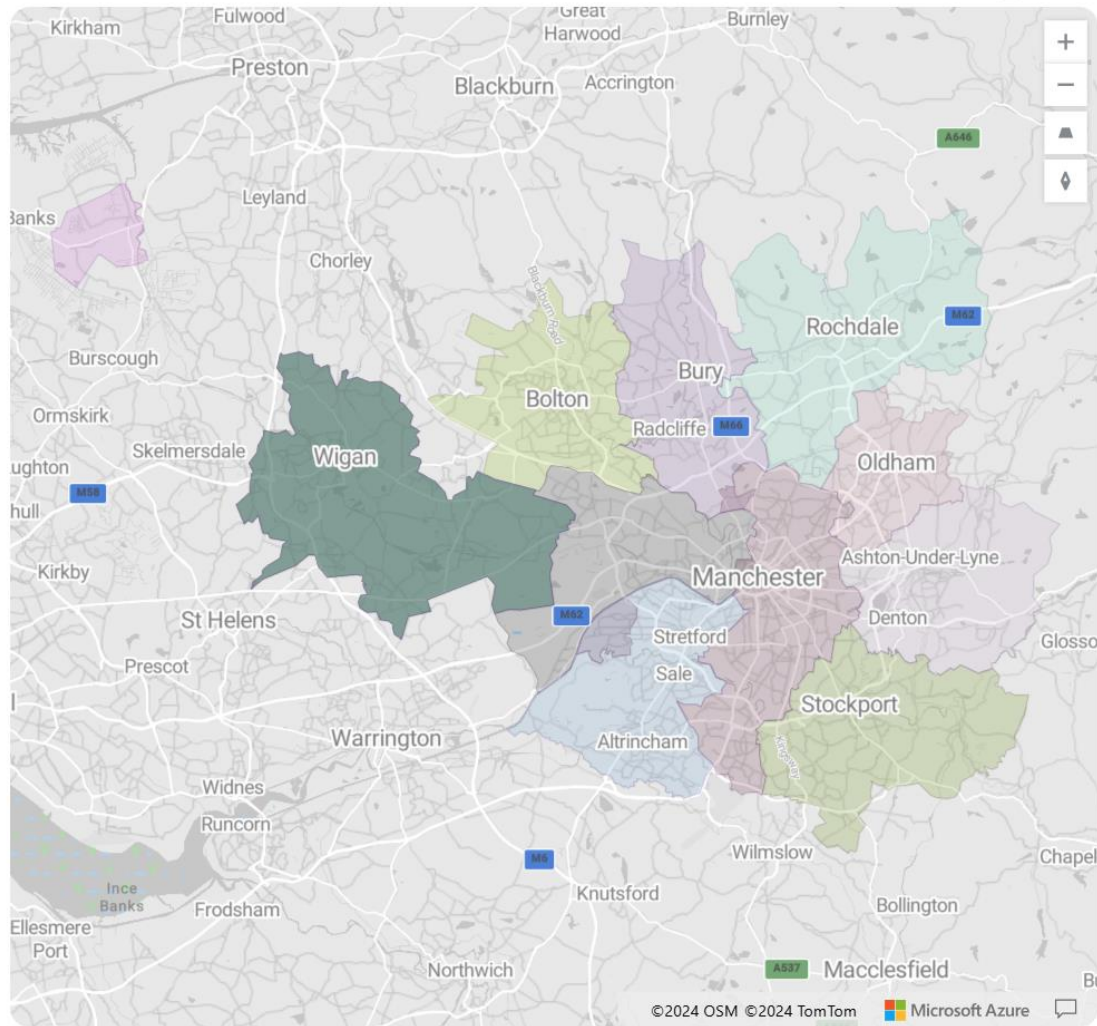


GMLPN Member Details

| GMLPN Member | Type | City/Town |
|------------------------|--------------------|-----------|
| Competence Development | ITP | Wigan |
| Expense Group | ITP | Wigan |
| FLM Training | ITP | Wigan |
| Seetec | ITP | Wigan |
| TMP College | Community Provider | Wigan |
| Wigan & Leigh College | FE College | Wigan |
| Wigan MBC | Local Authority | Wigan |

GMLPM Members by Local Authority

GMLPN Members by Location



Save the Date

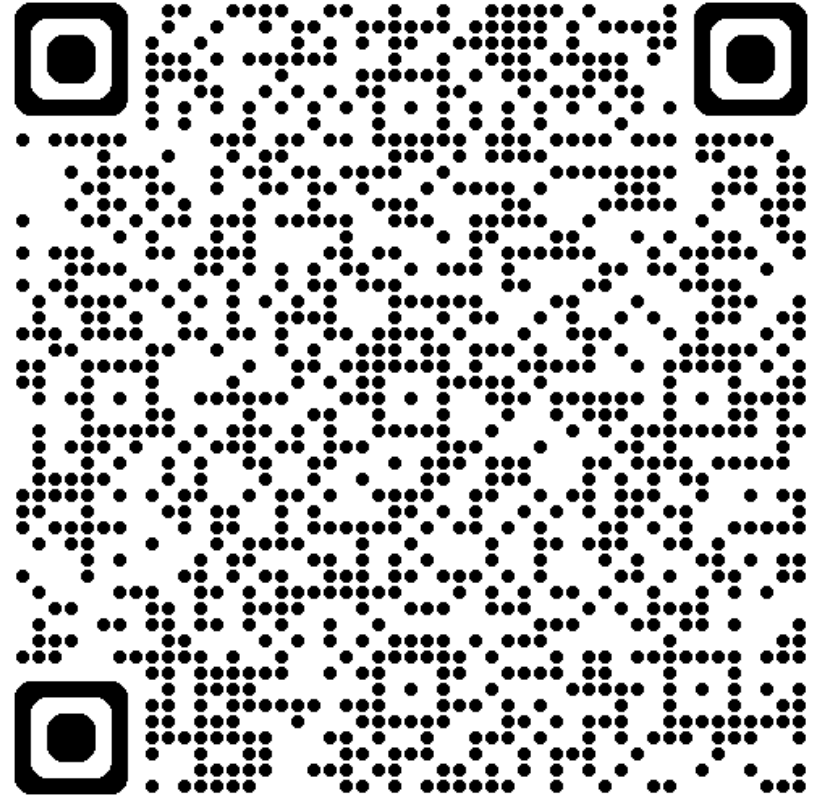
GMLPN Network Meeting

18th September 2024

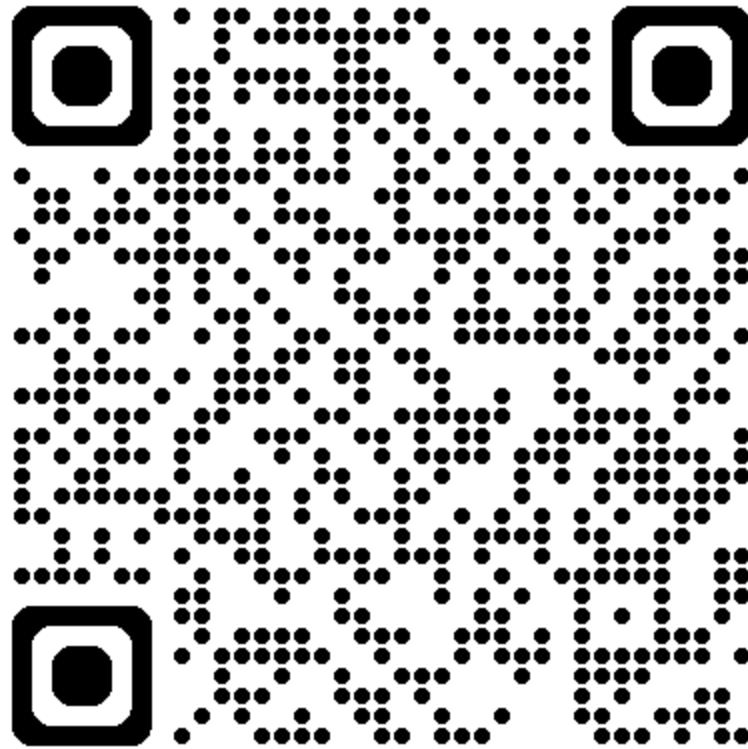
Venue TBC

Book a Meeting with Julie

Julie.l@gmlpn.co.uk



Evaluation



GMLPN 
Greater Manchester
Learning Provider Network

SUMMER SOCIAL

Wednesday 17th July 2024 | 13.15-15.00

Sponsored by:



Expression of Interest

Professional Exchange Forums



- Quality
- Safeguarding
- Mental Health & Wellbeing
- FE Recruitment & Workforce
- SEND

GMLPN Thematic Boards



- Adult Skills
- Careers
- Inclusive Employment
- Mbacc
- Technical Education